



METAL BLEACHER

RELIABLE PARTNER FOR SPORTS FACILITY



OfficeMart



Mexicali (686) 558 7874
Tijuana (664) 689 2823
Ensenada (646) 144 6362
Cd. Juárez (656) 564 1521
La Paz (612) 159 6391



ventas@oficemart.mx



oficemart.mx



OfficeMart



METAL BLEACHER

RELIABLE PARTNER FOR SPORTS FACILITY



Avant Sports

RELIABLE PARTNER FOR SPORTS FACILITY

Tel: +86 0755 26490688

Fax: +86 0755 29688489

Web: www.avantseating.com/

www.avantbleacher.com

E-mail: sales@avant.com.cn

Add: Avant Industrial Area, Zhoushi Road,
Bao' an District, Shenzhen, China

SHENZHEN AVANT SPORTS INDUSTRIAL CO.,LTD.



Note: Due to technology research and development, the product is constantly improving, the product appearance picture reflected in this product list is for reference only, the product appearance is subject to the physical object.



CONTENT

Company Introduction	01-04
Product Introduction	05-06
Anli Metal Bleacher System	07-10
Anly Steel Bleacher System	11-14
Sundon I-Beam Bleacher System	15-22
Aneasy Scaffolding Bleacher System	23-28
Ango Low Rise Aluminum Bleacher System	29-32
Seat Options	33-34
Job References	35-58

COMMITTED TO QUALITY

DEDICATED TO RESEARCH AND DEVELOPMENT

FOCUSED ON SERVICE

BECAUSE OF OUR DEDICATION AND EXPERTISE,

THAT WHAT IS AVANT.

PROFESSIONAL MANUFACTURE OF STADIUM SEATING



About Avant

Avant Sports has been deeply involved in the venue facility equipment industry for nearly 30 years. We are a supplier for three major international top-tier events, including the Olympics, F1 Formula One, and the World Cup. We are also the earliest and largest manufacturer of stadium grandstand seating in China.

Combining our extensive experience in large-scale venue construction with technological innovation, Avant Sports provides professional facility equipment and high-quality services to venues such as the Olympic Sports Center, National Fitness Centers, key universities, K12 schools, and various sports and cultural complexes.

AVANT SPORTS INDUSTRIAL CO.,LTD.

Milestone

2022

Qatar World Cup event stands supplier

2021

The 2020 Tokyo Olympic Games-metal bleacher system supplier

2020

Military World Games-exclusive sundon metal bleacher supplier (Wuhan)

2019

Seat and sports flooring supplier of the 13th China National Games (Tianjin)

2018

The Copa America(Chile)stadium seat system supplier

2017

South East Asia Games(Myanmar)stadium seating system-Exclusive seating system supplier

2016

World University Games(shenzhen)-exclusive seating system supplier

2015

FIA Formula 1 World Championship(Korea)metal bleacher system supplier

2014

Beijing Olympic Games stadium seat system supplier

2013

South East Asia Games(Thailand)stadium seat system supplier

2012

Norway football training center

2011

Metal bleacher supplier for 2022 Beijing Winter Olympics (Alpine ski resort)

2010

31st Summer Universiade-exclusive seating system supplier

2009

2019 FIBA Basketball World Cup-exclusive seating system supplier

2008

The Asian Games(Jakarta)-exclusive seating system supplier

2007

Olympic Game(Brazil)retractable unit system supplier

2006

Formula E(Malaysia) metal bleacher system supplier

2005

World Handball Championship (Oman)metal bleacher system-exclusive seating system supplier

2004

The Asian Games(Guangzhou)stadium seat system supplier

2003

The National Games(ShanDong)metal bleacher system supplier

2002

FIA Formula 1 World Championship(Singapore)metal bleacher system supplier

2001

Guangdong Foshan lingnanmingzhu Gymnasium

2000

Guangdong Huizhou Sports Center



Made in China
Serve Globally

120

Projects in More than 120 countries and regions



30+

More than 30 domestic offices

Excellent Service

- Customized solutions
- Technical commission
- Periodic maintenance
- 7*24 hours after service



Reliable Supply

- Leading technology and design of Avant Sports
- Strict quality control throughout the process



Installation Supervision

- Professional installation team



40%+

Overseas exports account for 40% of annual revenue



Environmentally friendly, safe and fast delivery of metal stand systems,
Provide quality viewing experience for various venues
Environmentally friendly and energy-saving metal materials, factory prefabrication,
site assembly. Fast delivery, with safety and comfort.

An alternative to the traditional concrete stands

Environmentally friendly
Materials can be reused

Fast delivery
Short production and installation

Safety
Meet the triple criteria





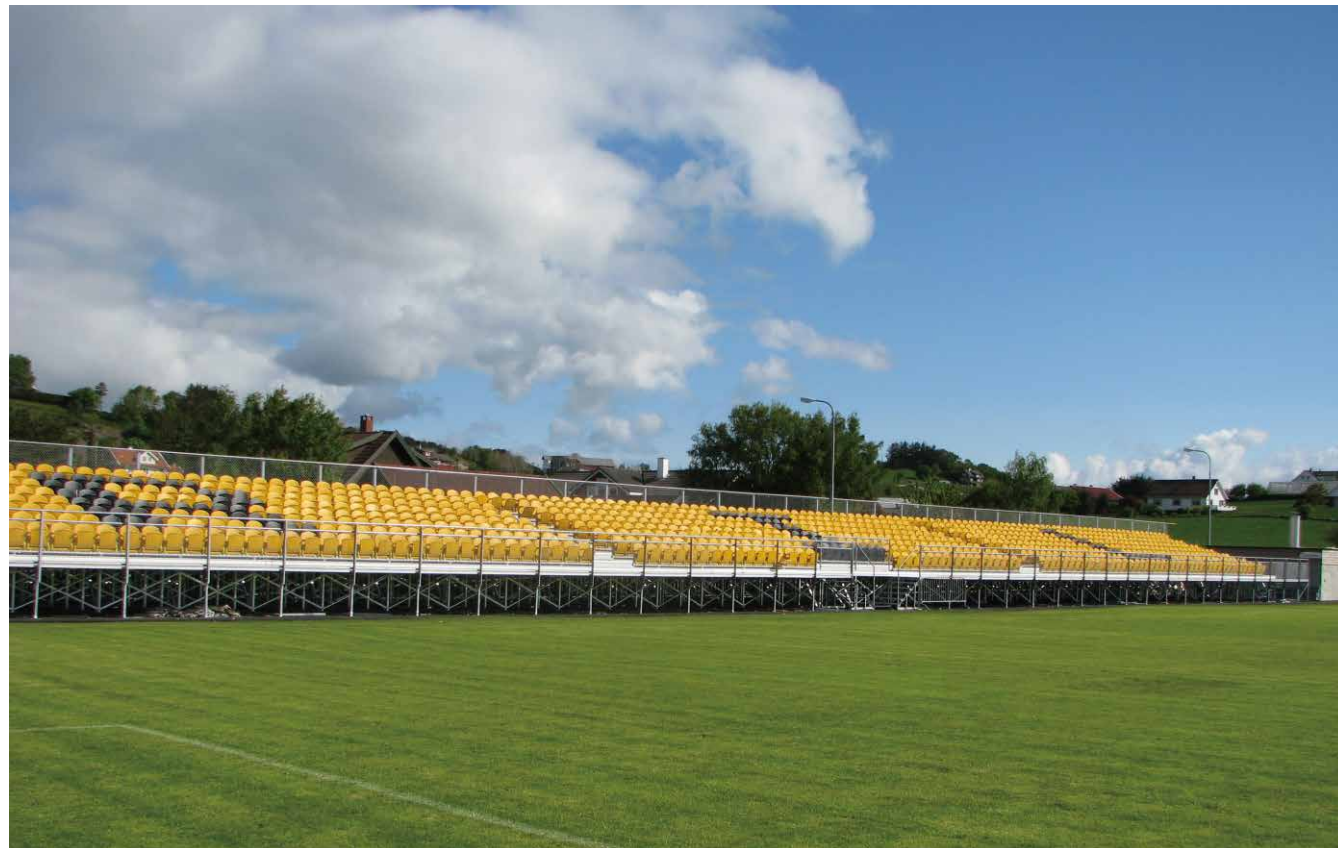
01

ANLI

Metal Bleacher System

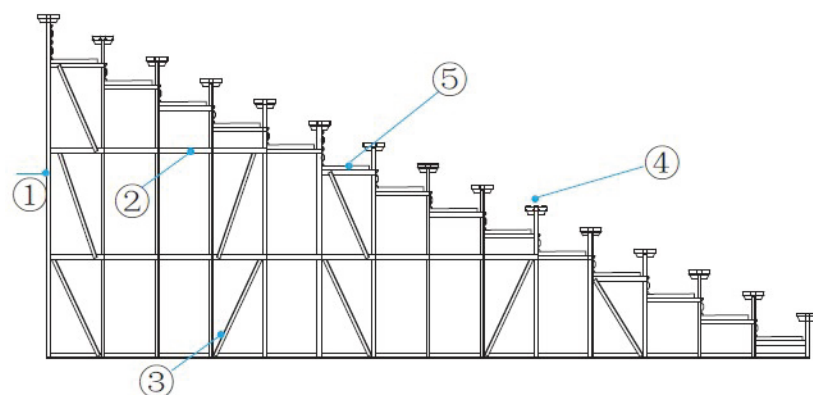
Medium sized metal bleachers with frame type bottom structure have high stability and lower cost.

Anli Metal Bleacher System



Product features

- The main frame is made of Angle steel solder resistance, forming a frame structure, the overall wind resistance, seismic effect is excellent.
- The bottom of the seat is made of steel support, there is no exposed metal seat on the seat corner is excessive rounded corners, the back of the seat is concave design, increase the foot space, fully ensure the comfort of the rear seat.
- The backplane can be color-matched with the seat, and the logo design meets the needs of customers, so that the decoration of the stand is more diverse and beautiful.
- Modular products, factory prefabrication, on-site assembly, in the assembly process can not do the ground basic treatment, greatly reducing the customer's budget, the comprehensive cost is lower.



- ① : Columns (Main frame)
- ② : Beam
- ③ : Tie rods
- ④ : Seat
- ⑤ : Deck

Structural Features



- The bottom structure adopts Angle steel assembly welding structure, which is more scientific and forms large contact with the ground, and the foundation requirements are lower.



- The column supports the standard spacing, and the adjacent two spans are connected with Angle steel tie rods in the middle. The whole frame structure is formed, and the stability and bearing capacity are stronger.



- The backplane is bent and formed as a whole, which can evenly distribute the load of the grandstand, so that the whole upper grandstand has higher strength, stronger load and more stable structure.



- The deck is made of special mold, extruded in one piece, and installed with special fasteners, with good stability and no gap.



- The guardrail is steel grating guardrail, the material is welded with round steel, and the movable hanging anti-retreat device can effectively prevent climbing and avoid accidents.



- The deck is made of special mold, extruded in one piece, and installed with special fasteners, with good stability and no gap.



02

ONLY

Steel Bleacher System

A prefabricated steel bleacher can be deployed in medium-sized sports stadiums. The large-span bottom structure can be equipped with functional rooms to achieve multi-functionality in the lower space.



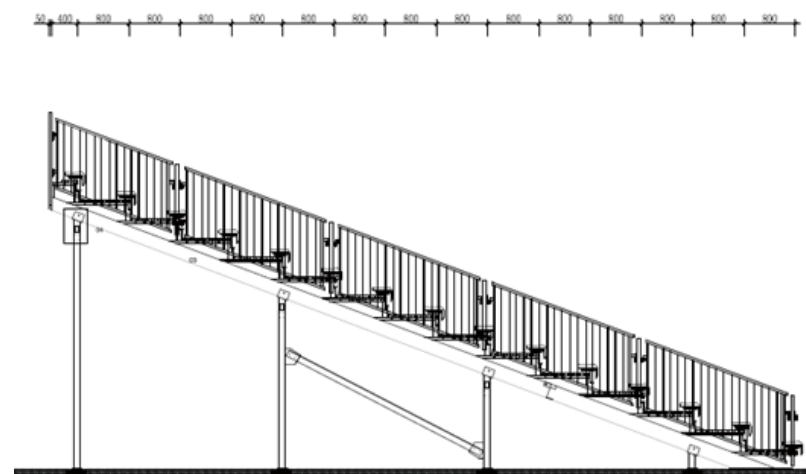
Structural Features

- The bottom structure is made of square and rectangular steel welded together, following scientific structural calculations and international inspections.
- The back panel is made of steel roll forming, providing higher strength and a more aesthetically pleasing appearance.
- The treads are made of extruded aluminum alloy, with a surface design of anti-slip patterns, ensuring safer usage.
- The guardrails are made of square and flat steel welded together, using a hanging connection met.

Options

Product Features

- All product components are manufactured according to factory standards and assembled on-site, realizing prefabrication and improving production efficiency.
- The grandstand can be equipped with control rooms, sunshades, podiums, stages, and other functions, making the entire grandstand more versatile.
- Steel and aluminum materials can be fully recycled and can be disassembled and installed again, ensuring high utilization.



Roofing System



Ramp for ADA



Handrail for middle aisle



Functional Room



Rail



Podium



Control Room



03

SUNDON

I-beam Steel Bleacher System

A multi-level prefabricated metal grandstand can perfectly replace traditional earth-built grandstands in large sports stadiums. The construction period of the grandstand is short, the materials are recyclable, environmentally friendly, and it can be equipped with facilities such as restaurants, parking lots, indoor tracks, training rooms, gyms, and conference rooms.



1. Support Legs and Main Beam

It is assembled and welded using H-shaped steel to form a unique large-span assembly system.



2. Back Board

The integrated roll-formed back board evenly distributes the load of the grandstand, ensuring the strength, durability, and rigidity of the grandstand system.

3. Tread

The aluminum treads have a non-slip texture on the surface, providing anti-slip and drainage functions, and reinforced ribs at the bottom for added stability.



4. Railing

The vertical textured guardrails with a low spacing prevent climbing, and the guardrails have anti-retreat devices for enhanced safety.



Multiple-Tiers Grandstand



General Seating



Media Seating



VIP Seating



Photography Platform



Substitute Seating



Box Seating

Functional Room



Parking Lot



Locker Room



Referee Rest Room



VIP Room



Media press room



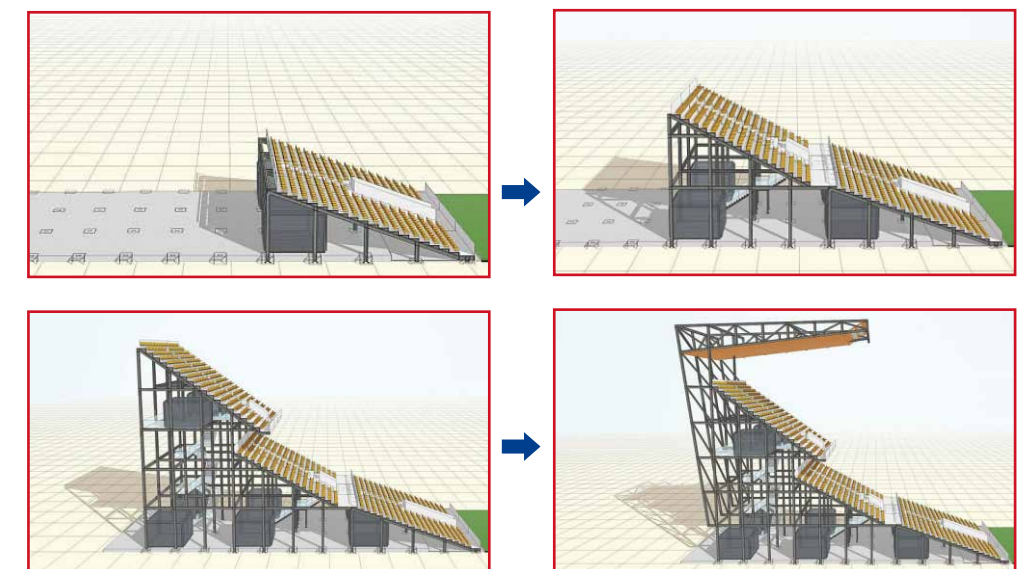
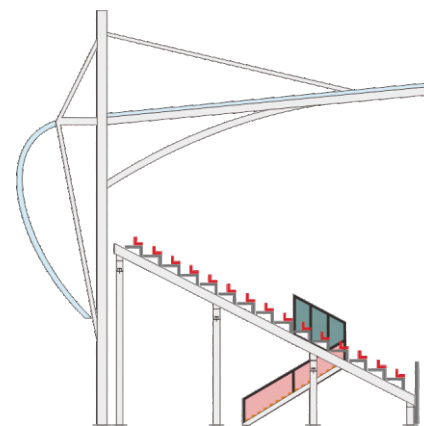
Meeting room

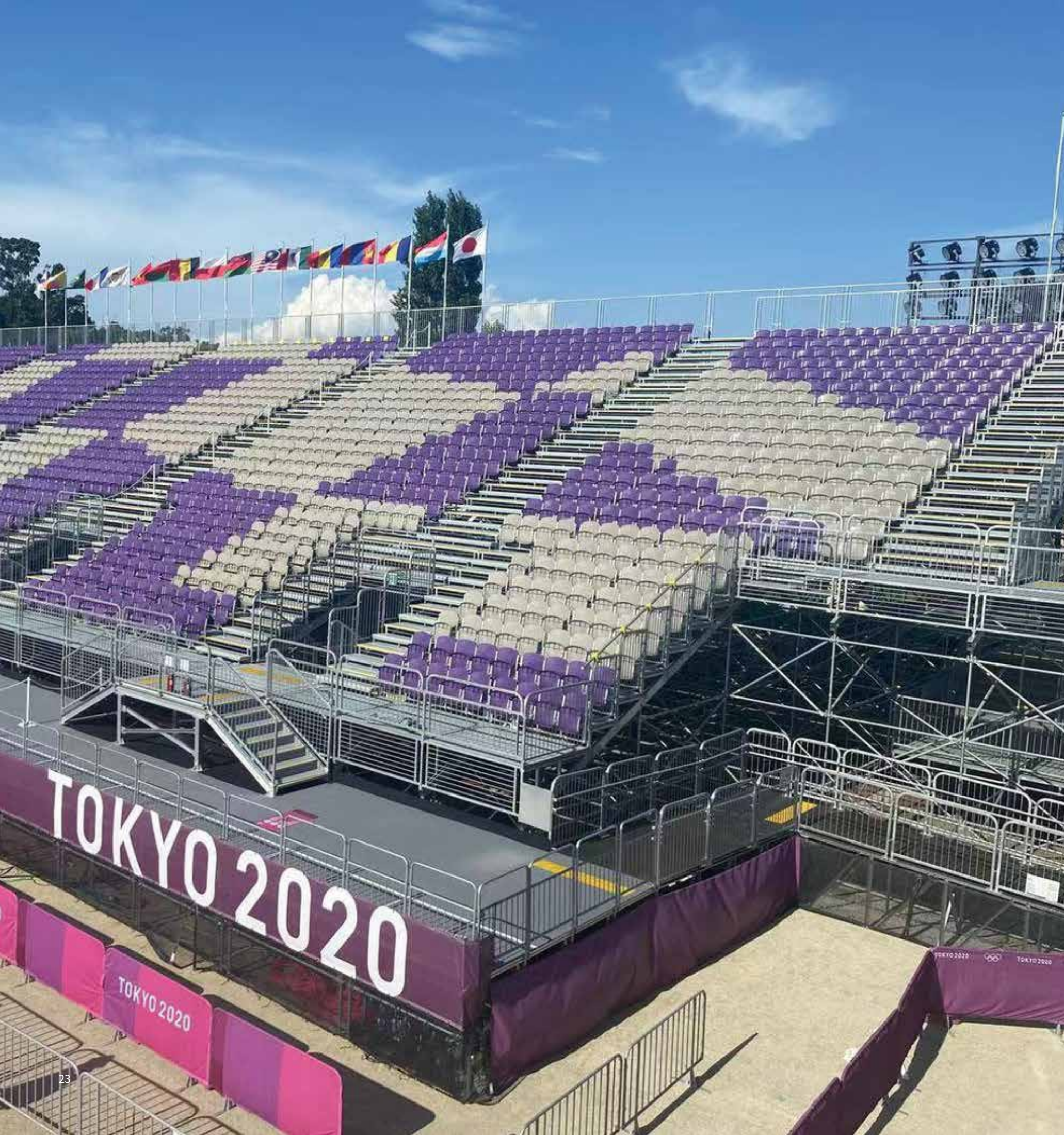


SUNDON I-beam Stadium



The Xiaodun metal structure grandstand is a large-scale steel structure grandstand developed by our company. In addition to the energy-saving, environmentally friendly, and fast installation advantages of metal grandstands, its three-dimensional application in the site space maximizes the functionality of the grandstand, providing customers with a more diverse range of products and experiences.



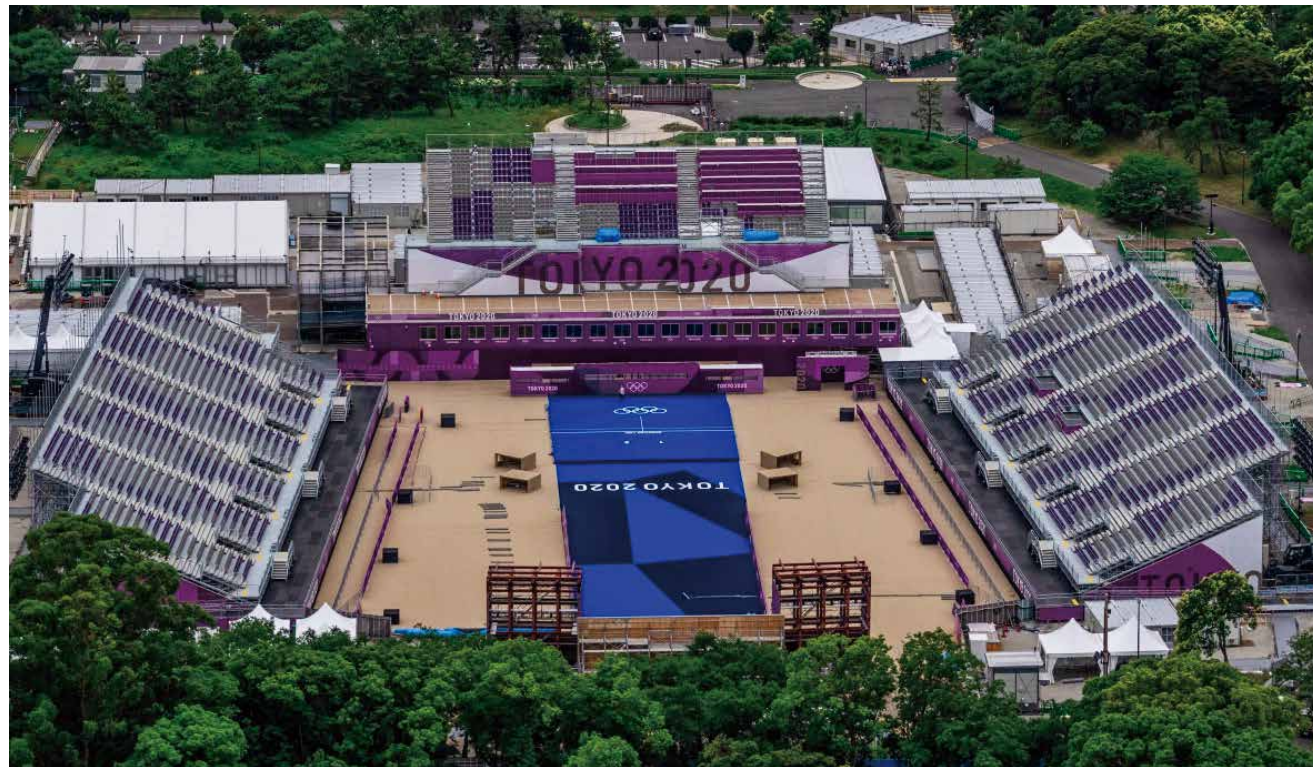


04

ANEASY

Scaffolding Bleacher System

Detachable metal grandstand, with no seating limit, dedicated to the seating needs of temporary events and activities. The grandstand can be quickly deployed and installed, and can be dismantled quickly after the event without damaging the foundation environment.



Structural Features

- The main frame is made of steel pipes and flange plate structures, designed according to the highest European standards and certified by international institutions.
- The columns, tie rods, treads, back panels, and guardrails are all standard components. These standard components allow the grandstand to form a modular system that can be maximized according to different site dimensions, maximizing the utilization of the venue.
- The treads are made of roll-formed integrated treads with textured surfaces and anti-slip strips.
- The grandstand can be installed with modules in both horizontal and vertical directions simultaneously, and the installation requires no bolts except for the front and rear guardrails and diagonal tie rods, greatly reducing installation time.



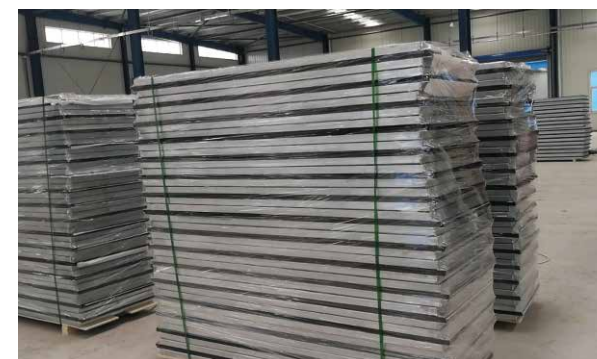
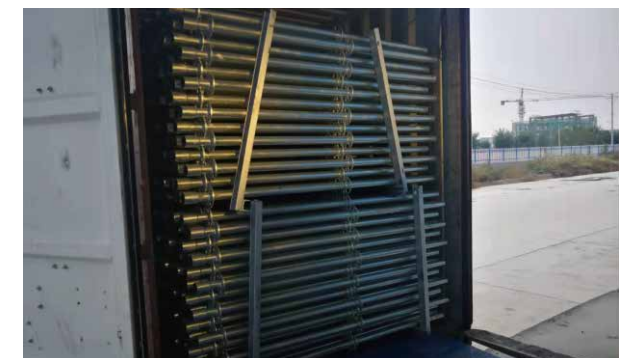
Product Description

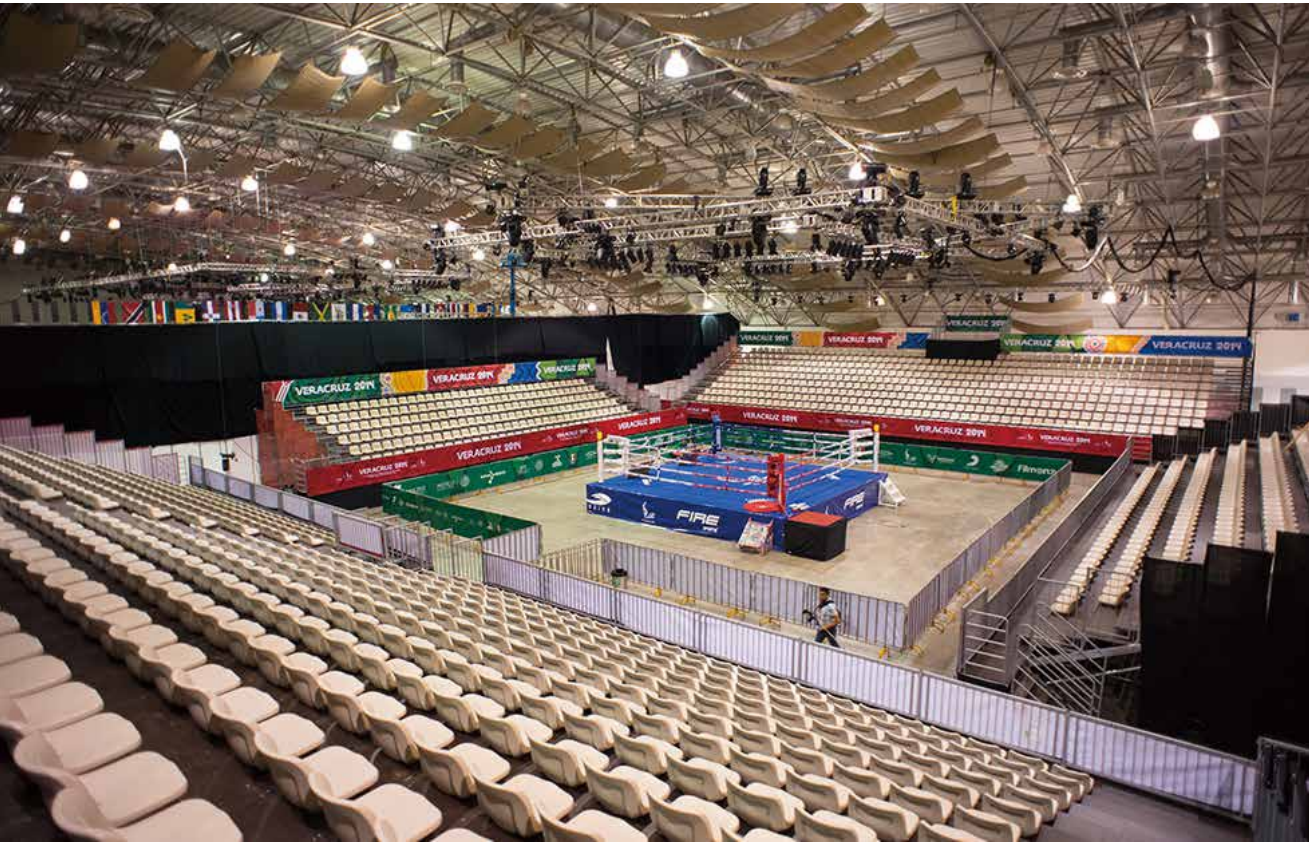
Aneasy is a solution tailor-made for temporary stands for large-scale events. Avant has a wealth of large-scale event service cases and has served international events such as the Beijing Winter Olympics, Tokyo Olympics, Shenzhen Universiade, Singapore F1, and Nanjing Youth Olympic Games.



Packaging & Transportation

All bottom metal structural components are packaged and placed in metal frames, classified and stored. Each frame has a height of 1.5mm. The seats are designed with plug-in connection and stored in standard frames, stacked in three layers, with 84 seats per frame. This makes transportation, loading and unloading, and storage of the grandstand more convenient, saving space and achieving high efficiency and low overall cost.





Various Applications

The dismantling and assembly of the grandstand system is highly flexible and unaffected by terrain, weather, and other environmental factors. We provide comprehensive and all-encompassing solutions for various scenarios.



Concrete ground surface



Grass ground



Sandy ground



Circular grandstand



Polygonal grandstand



Curved grandstand



Elevation

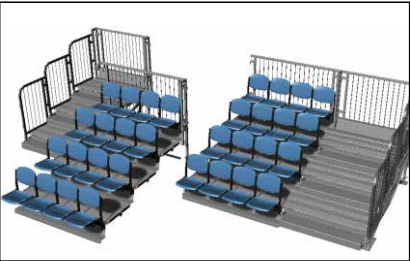


Door openings



Accessible ramps and platforms

Modular Assembly



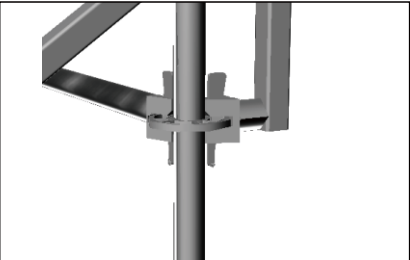
The grandstand can be modularized in any way



With standardized stairs



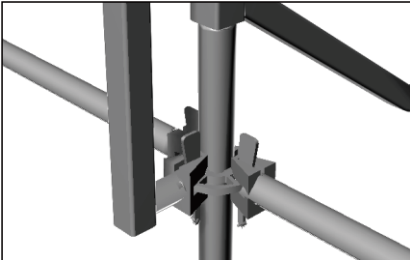
Assembly of seats in rows



Standard component structures



Interlocking structures



Efficient flange plate assembly and disassembly



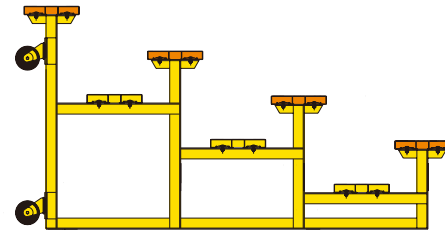
05

ANGO

Low-Rise Aluminum Bleacher

The small-row aluminum stands have a stable structure and can be moved quickly in various small stadiums without maintenance. The stands are equipped with universal wheels for easy movement at any time.

Ango is a flexible and durable small-row bleacher system that can be flexibly designed through row numbers, fixed patterns, colors, etc., fully solving the customization problems of temporary bleachers in small venues.



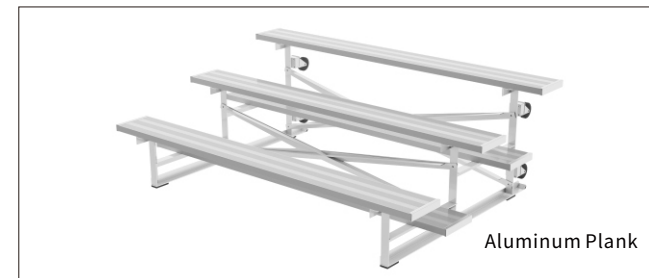
Specifications

Step Width 637mm
Step Height 181mm (2-3 rows)/148mm (4 rows)
Width 7.5/15/21 feet

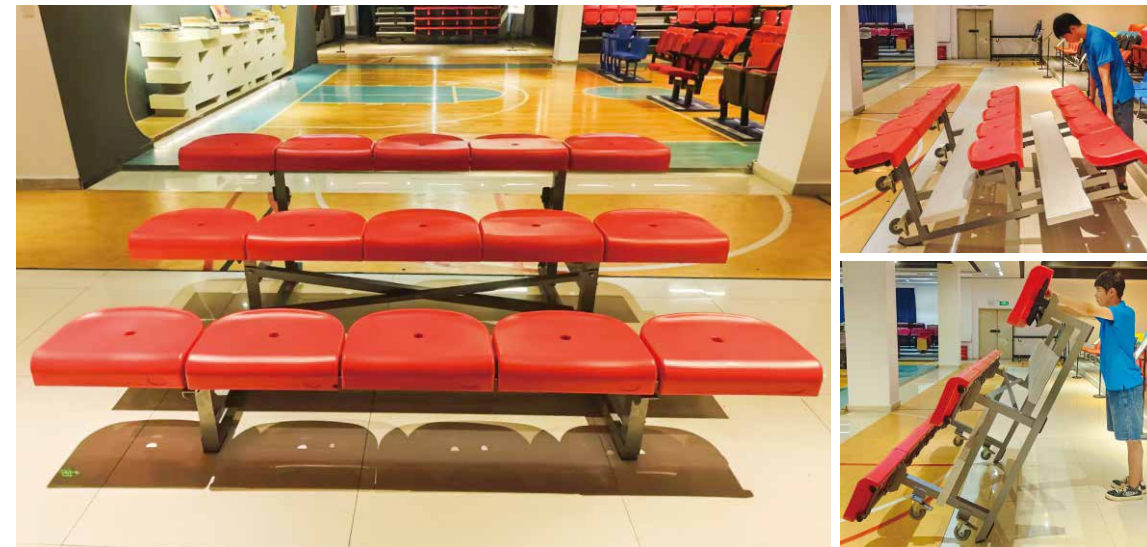
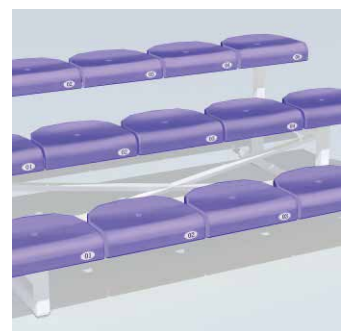
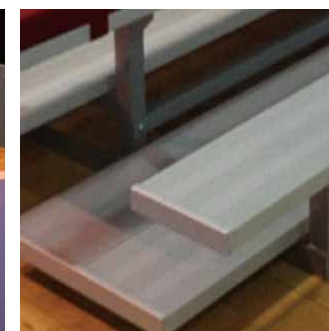
The substructure is welded from aluminum and the decking are extruded from aluminum alloy, and the surface process is anodized.



Seat Choice



Accessories



Application



Vogue



Coolin



Salin



Diamond



Diamond



Merit



Hilo



Hilo



Hilo



Product Series	Product Name	Product Model	Applicable System
Hilo Series	Hilo	YH-ZY	Anli Anly Sundon
	Hilo	YH-QF	Anli Anly Sundon
	Hilo	YH-CF(J)	Anli Anly Sundon
	Hilo	YH-CY2	Anli Anly Sundon Aneasy
Diamond Series	Diamond	JZ-CF	Anli Anly Sundon Aneasy
	Diamond	JZ-CY3	Anli Anly Sundon Aneasy
Kook Series	Merit	MR-CF	Anli Anly Sundon
Coolin Series	Coolin	KL-CY	Anli Anly Sundon
	Coolin	KL-CF	Anli Anly Sundon
Salin Series	Salin	SL-CY1	Anli Anly Sundon Ango
	Salin	SL-CY2	Anli Anly Sundon Ango
Shine Series	Shine	SY-ZF	Anli Anly Sundon Aneasy
	Borway	BW-ZY	Anli Anly Sundon Aneasy
Plank Series	Vogue	AG-CY	Anli Anly Sundon Ango
	Wooden Plank	JK-KY	Anli Anly Sundon Ango
	Aluminum Plank	LTD	Anli Anly Sundon Ango
	Leuper	LP-CY	Anli Anly Sundon Ango

Plastic Seat Color Option

White 000	Sand 482C	Dark yellow 157C	Gold 116C	Yellow soil 125C	Orange 165C
Red 186C	Dark red 194C	Burgundy 504C	green 348C	Blackish green 627C	Grey brown 403C
light Blue 7689C	Blue 2945C	Deep blue 281C	Purple 269C	Black 419C	



A variety of color schemes are available, and customized services such as distinctive stand patterns, text, and logos can be designed as needed.

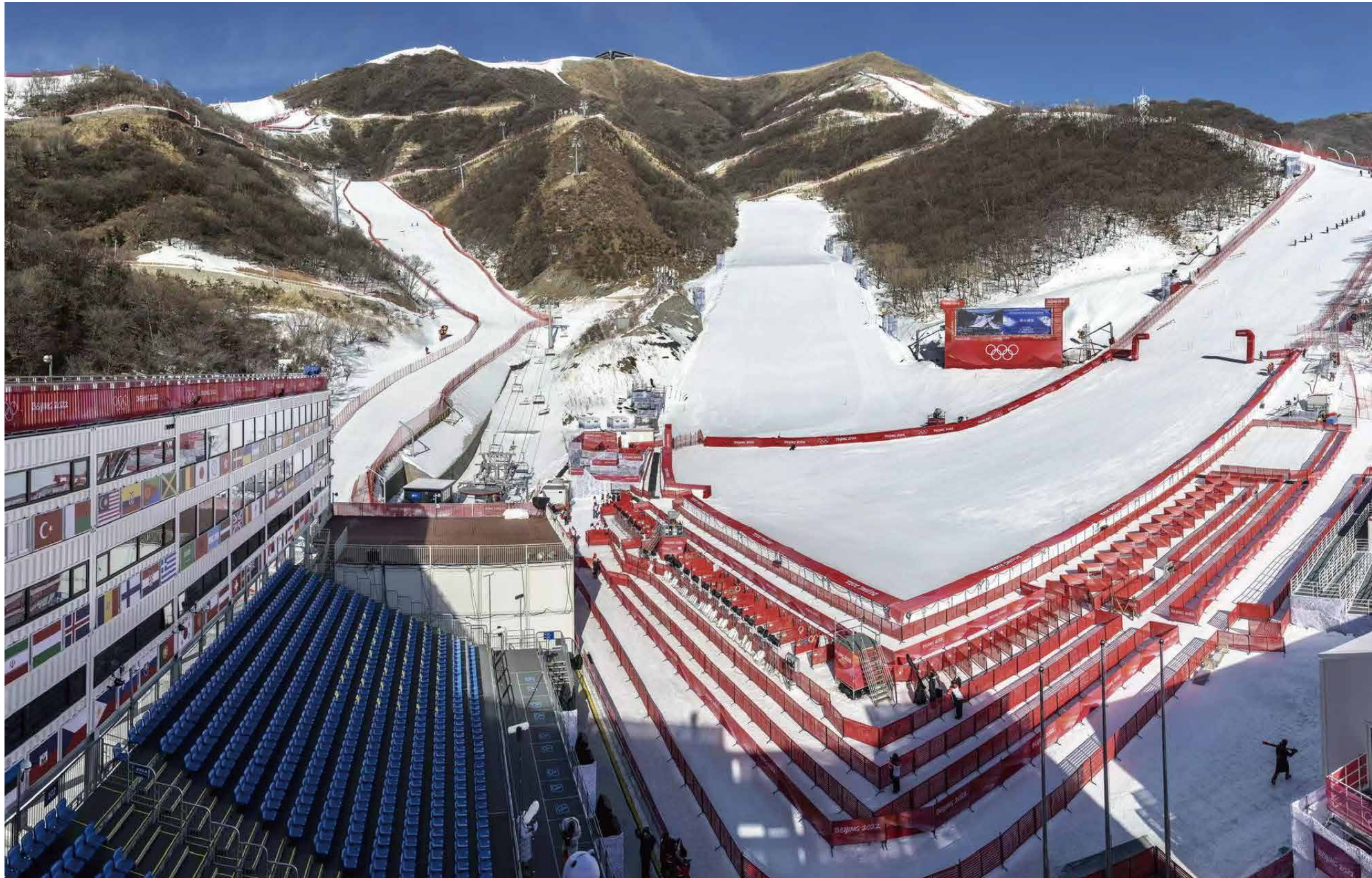
2023

FIBA3X3 Basketball Challenge



2022

Beijing Winter Olympics (National Alpine Ski Center)



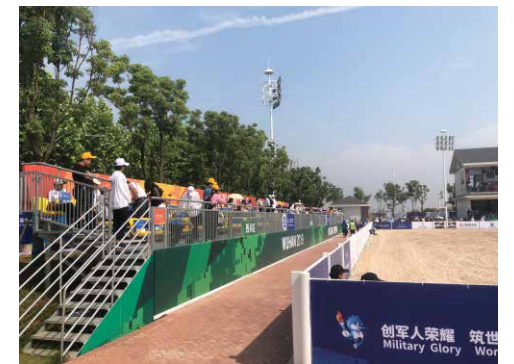
2020

Tokyo Olympic Games (Archery eld of Dream Island Park)



2019

Wuhan World Military Games



2011

Shenzhen Universiade



Formula One

(Korea)

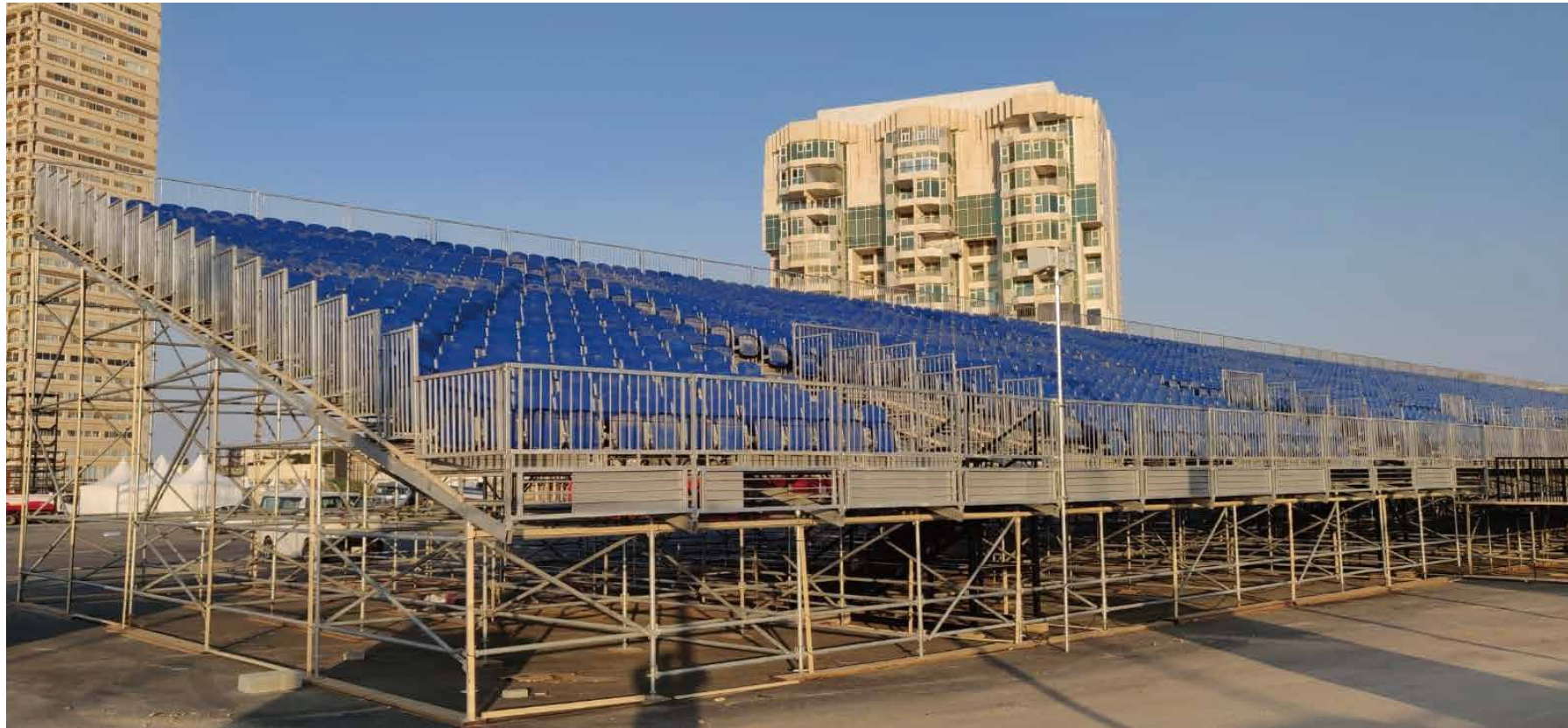


Formula One

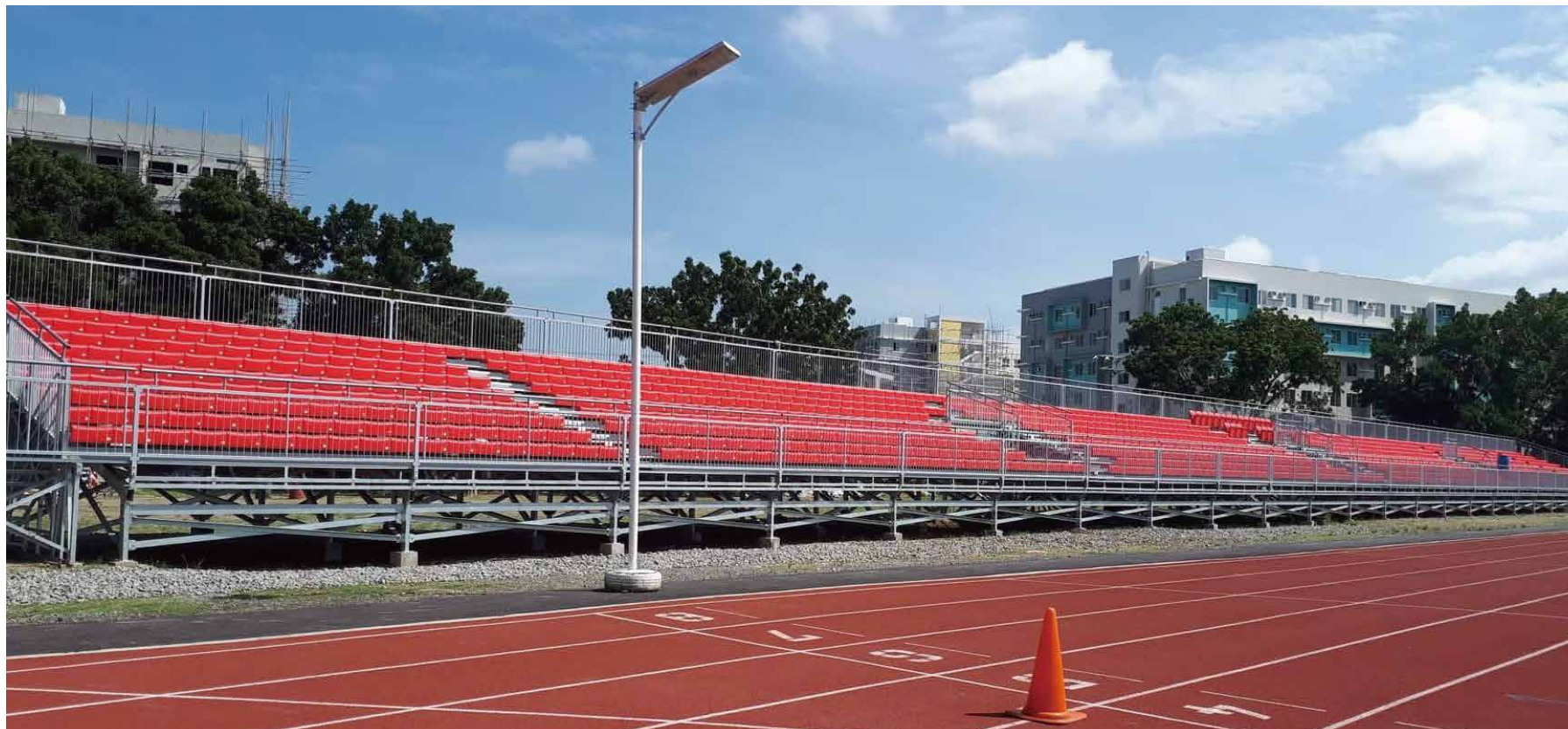
(Singapore)



Formula 1 (Saudi Arabia)



University of the Philippines Mindanao



Wuhan Citizen Sports Center



Guiyang Qiannan Sports Center



Wuhan Business University



Thailand



Malaysia Formula E



Zhejiang Citizen Sports Center



Nanjing Summer Youth Olympic Games



Guangxi Shangsi Sports Center



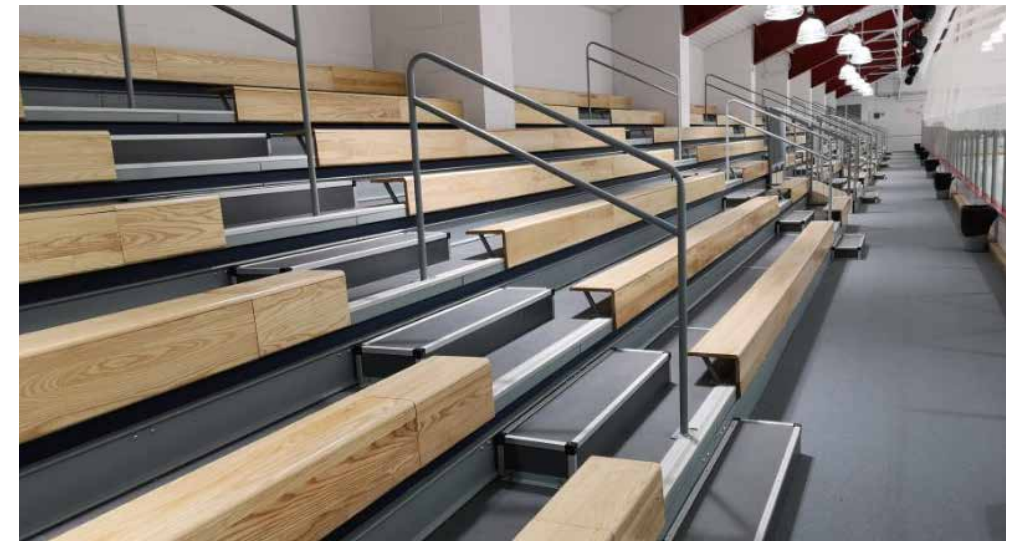
Papua New Guinea



Shaanxi Sports Center



USA



Shenzhen Xinan Middle School



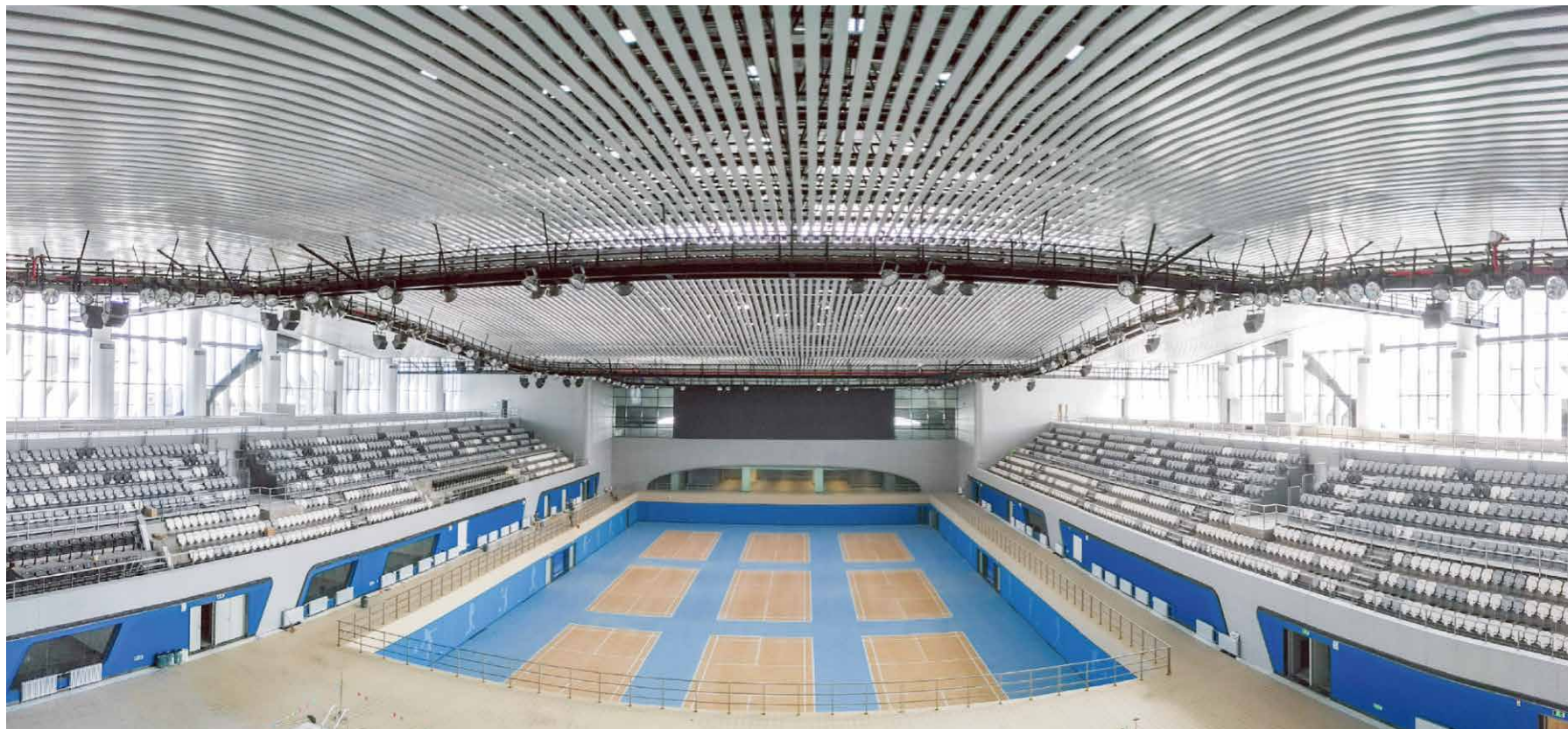
Shanghai Citizen Sports Center



Oman Handball Championship



Hangzhou Huanglong Stadium



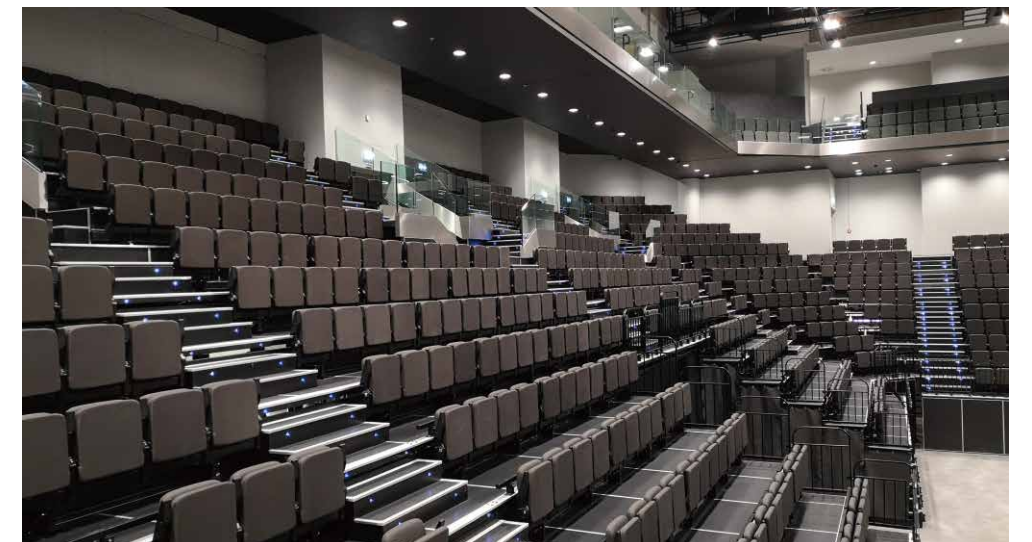
Denmark



Singapore Youth Olympic Games



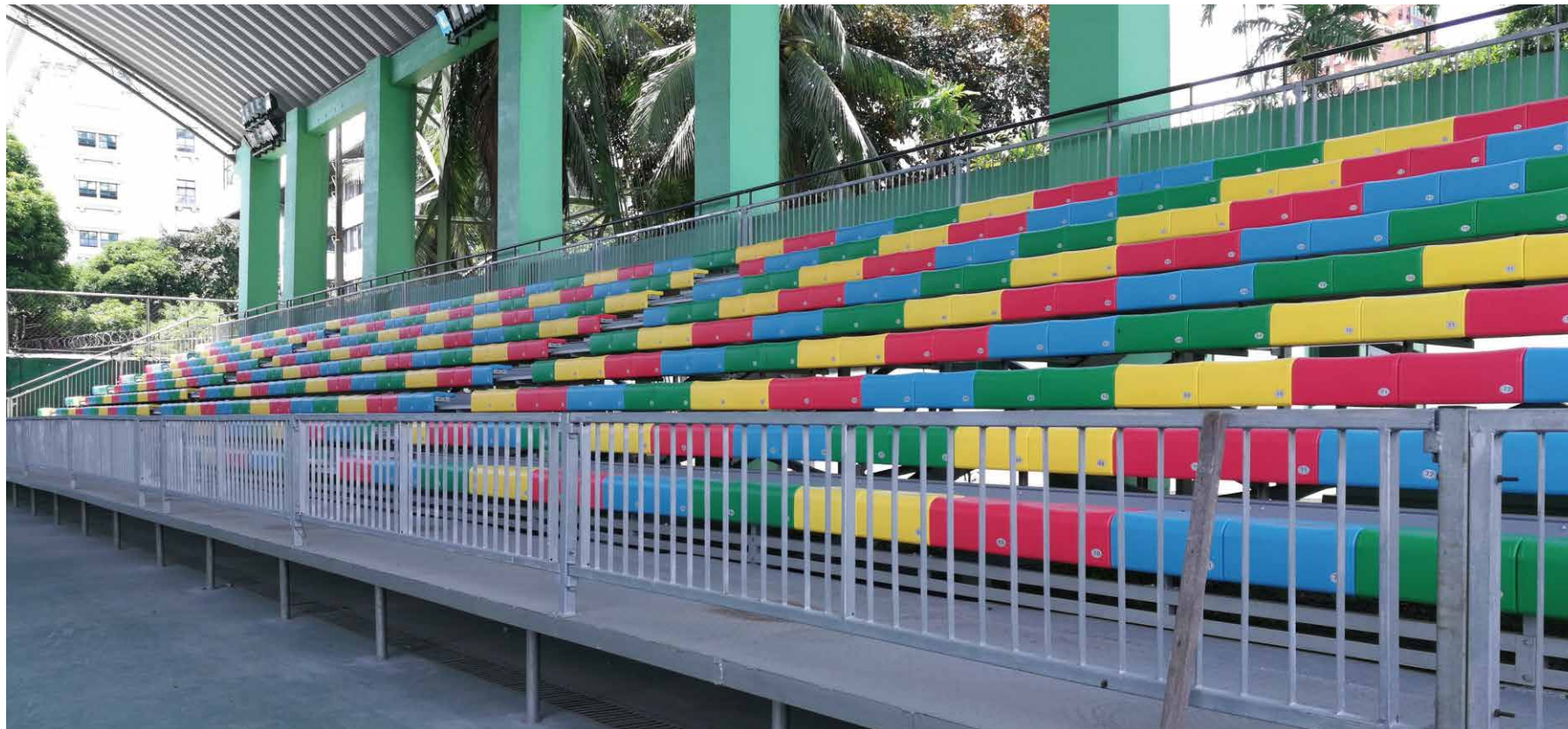
Czech Republic



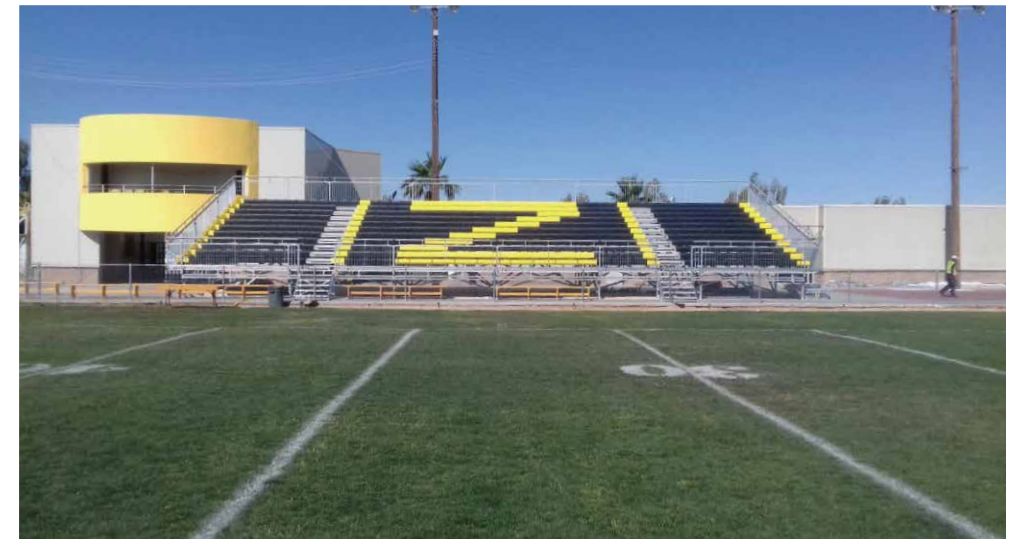
China Guiyang



Philippine



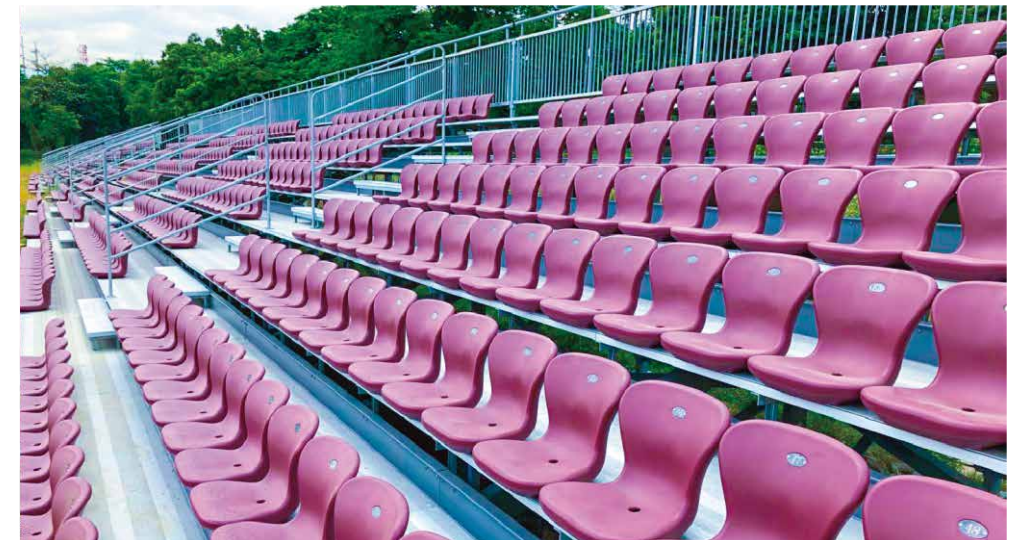
Mexico



China Taizhou



University of the Philippines Diliman





More Job Reference

Beijing National Alpine Ski Center
Tokyo Archery Hall, Japan
Wuhan Taizihu Sports Center
Wuhan Business College
Shaanxi Trail Management Center
Shanghai Park
Singapore Olympic Games
Korean Formula 1
Singapore f1 formula
Shenzhen Convention and Exhibition Center
Nanjing Olympic Games Football Stadium
Qianfan Sports Center
Chengdu China Equestrian Festival
Bahrain football training base
Geneva Grandstand
Yunnan Lijiang Racecourse
Shandong National Games Baseball Stadium
Malaysian Formula E
Saudi Arabia Formula 1
Oman Handball World Cup
Singapore Youth Olympic Games
Shenzhen Senior High School
Shenzhen Xi’ an Middle School
Norwegian football training base
Shandong Jinan Baseball Stadium
Shekou Sports Center
Tianjin Olympic Sports Center Training Ground
Yanzigang Middle School
Qinghai Vocational School
Yunnan Lijiang Racecourse
Czech Republic Stadium
Southern Airlines Training Center
Dongxing Stadium
Rucker Park
Cowpat Town Stadium Stand
Guangxi Shansi Comprehensive Training Center
Changsha High-tech Engineering School
American old farm school
Australia Stadium
Denmark Stadium

Taizhou Tennis Center

Urumqi No.1 Middle School

Urumqi No. 9 Middle School

Hangzhou Huanglong Diving Hall

University of the Philippines

Major League Baseball

Henan Dengfeng Experimental Middle School

Sichuan Jinqiang Gymnasium

Anxiang Badminton Hall

Nanjing International School

Hunan Provincial Sports Bureau Comprehensive Hall

Hunan Badminton Hall

Philippine National Tennis Center

Irish racecourse

University of the Philippines

Major League Baseball

Henan Dengfeng Experimental Middle School

Sichuan Jinqiang Gymnasium

Anxiang Badminton Hall

Nanjing International School

Hunan Provincial Sports Bureau Comprehensive Hall

Hunan Badminton Hall

Heilongjiang University of Finance and Economics

Taicang New District, Jiangsu

Thailand Football Center

Tin Ka Ping Secondary School

Wuhan National Fitness Center

Wuhan Basketball Stadium

Guiyang Badminton Hall

Wuyi New District Sports Center

Gansu Lanzhou Center

Gansu University of Finance and Economics

Zhejiang Normal University

Hangzhou Asian Games Squash Hall

Ningbo Haishu Gymnasium

Shenzhen Youth Training Base

Inner Mongolia Three Gorges Middle School

Zhengzhou No.4 Middle School

Shanxi Football Stadium

Xinjiang Bazhou Bohu Middle School

Urumqi No.20 Middle School

.....